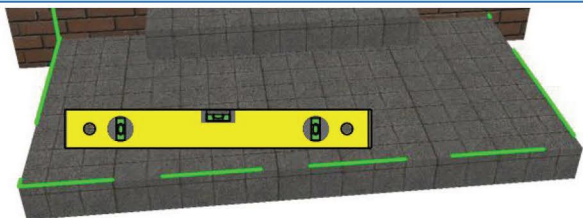


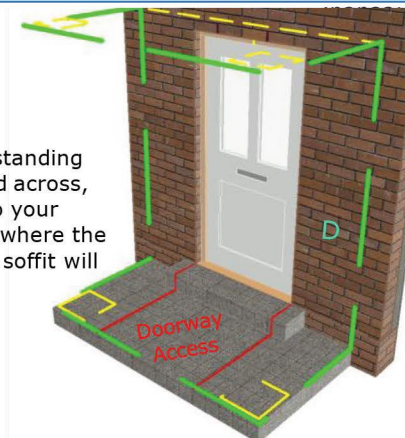
# GRP Portico Assembly & Installation instructions

①



- A** Guidance notes are for fixing the Portico Columns & Canopy over a **flat and level hardstanding structural base**.
- B** Canopy Soffit underside (shown in point 7) recommended to be the same size as the hardstanding base.
- C** Measure Canopy Soffit length and projection. Mark out measurements onto hardstanding to desired location (recommended to be central with your door opening.)

②

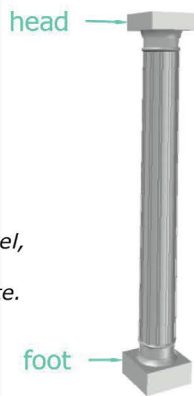


- D** Continue line from hardstanding base up onto the wall and across, over the door opening to your desired column height / where the underside of the canopy soffit will be.

③

- E** When ordering the Columns: Confirm dimensions of overall height, foot height and head height.

*If your hardstanding is uneven / not level, you can order the Columns with an oversize foot - to then trim/scribe on site.*



④



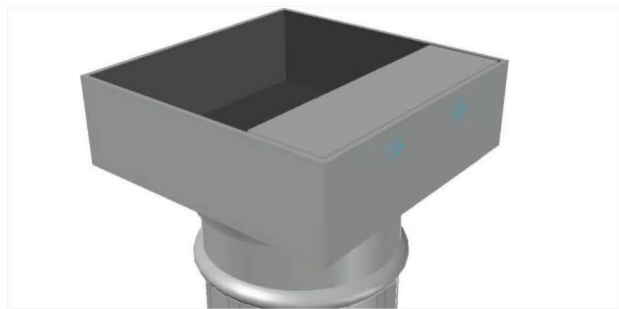
- F** Mark the outline of the column feet at desired positions onto the hardstanding base. We recommend the columns to be 50-100mm inside the Canopy Soffit, equal on both sides (as shown in point 7.) This is only possible if the soffit is at least the same size as the hardstanding.
- G** Ensure the columns do not encroach the **doorway access** or any windows. Once satisfied with location of Canopy & Columns you may now begin the installation process as follows.
- H** Fix each plastic block onto hardstanding base, 6mm inside column markings, using min 2no 150mm concrete screw fixings.

⑤



- I** Place the first column foot over the plastic block.
- Fix through both sides into the plastic block using 4no 70mm wood-screws with washer to take cover caps. Cover fixings with colour-matching caps.
- Repeat for both columns.*

⑥



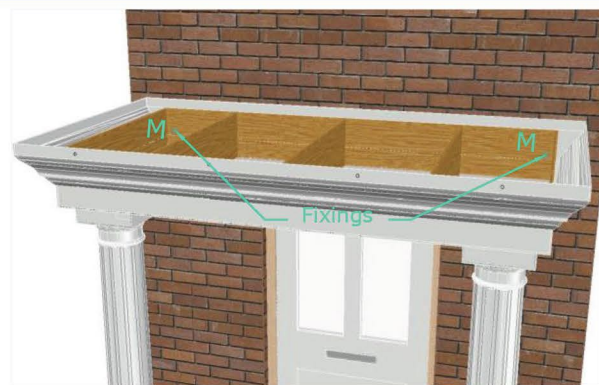
- J** Fix 1no Plastic block inside each column head – keeping it flush with the top (using 2no 70mm wood-screws, with washer to take cover caps.)
- The blocks are in readiness to take fixing from inside the canopy soffit when the soffit is positioned on top of the columns.*

⑦



- K** Offer the canopy soffit to the wall and sit onto the columns. Ensure the soffit lines through with the pre-marked lines on the wall.
- L** Two Operatives (one at each side) are to support the canopy soffit up against wall until the soffit is fixed to the wall (as in point 8.) *For additional support use temporary props if needed.*

⑧



- M** A third operative is to drill 6.5x120mm tight to both ends (centrally.) Fix using 7.5x100mm concrete fixings with oversize mudguard washers.

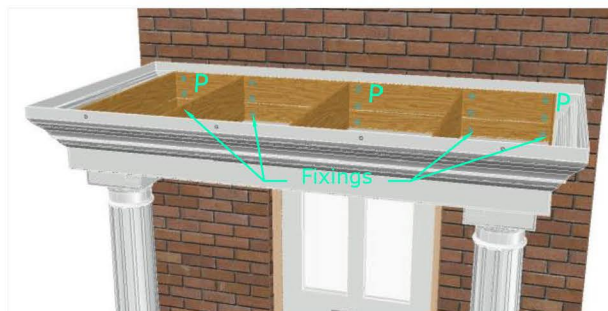
9



**N** Use a spirit level to double check the canopy projection is level.

**O** Pack between the back of the canopy and wall where required. Tighten/slacken fixings if necessary.

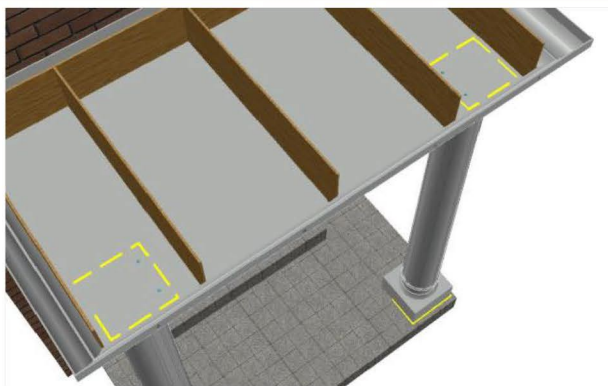
10



**P** Once satisfied canopy is all level & even, put 3 fixings (1no into each brick course) adjacent to all baffles and at both ends of canopy - 7.5x100mm concrete fixings with oversize mudguard washers.

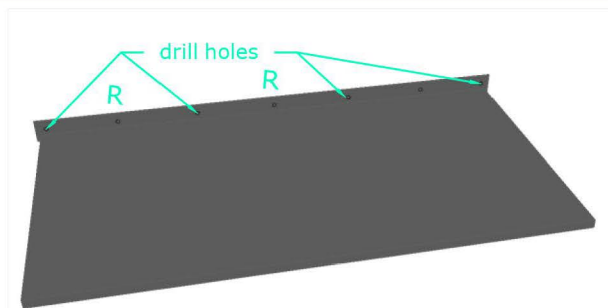
Please note: If fixing to Frog Hall brick - ensure fixing goes into solid part of brickwork.

11



**Q** Fix down through the canopy soffit into the heads of both columns' plastic blocks.

12



**R** Mark and pre-drill the roof part of canopy along the back flange at minimum 600mm centres, using 6.5mm drill bit.

*Holes to be equally spaced and at the same height.*

13



**S** Offer the roof to the soffit. Pins inside roof to meet holes in soffit.

**T** Drill (with a 6.5x120mm bit) through pre-drilled holes and into the brickwork. Fix using 7.5x100mm concrete fixings (600mm c/c) with washers to receive cover caps.

14



**U** Before fixing tight, packers may be necessary between the roof flange and brickwork to prevent the canopy going out of level.

**V** Silicone mastic seal roof flange/wall and soffit/brickwork in the appropriate colour.

**W** Cover all visible screw heads with colour matching caps. Alternatively, lead flash brickwork and over flange (optional.)